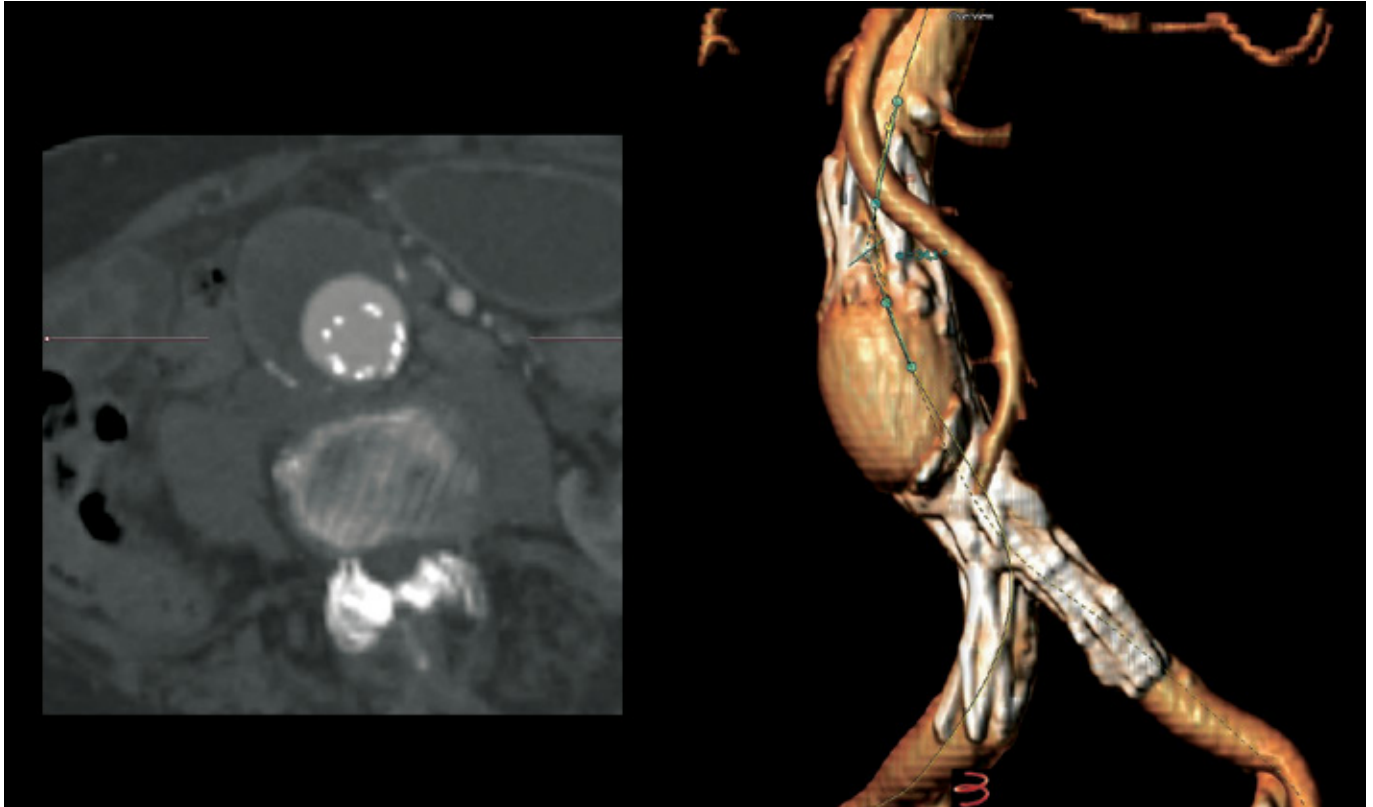


VASCULAR IMAGE

Endoleak imitation after EVAR

Petroula N. Nana, Nikolaos I. Rousas, Miltiadis I. Matsagkas

Department of Vascular Surgery, Faculty of Medicine, School of Health Sciences, University of Thessaly, Larissa, Greece



An 85-year-old female patient treated electively for a 5.9cm abdominal aortic aneurysm using a two pieces, second generation, AFX endograft (Endologix, CA). Pre-operatively, an infrarenal proximal neck angulation of 58° was present. At 1st month follow-up an important quantity of contrast was observed between the proximal endoskeleton and the graft material, imitating a well delimited, “smooth” saccular endoleak. The proximal neck angulation after EVAR was reduced, but still measured at 34° and probably is responsible for this exceeding finding. This phenomenon has been described as billowing and it concerns a benign imaging finding which can be incorrectly considered as an endoleak. A closer follow-up is mandatory in these cases, as there is an association in billowing and late sac expansion and aneurysm rupture.

Author for correspondence:

Petroula Nana

Resident Doctor of Department of Vascular Surgery
University Hospital of Larisa

Mezourlo, 41110, Larisa, Greece

E-mail: petr.nana7@hotmail.com,

Tel.: +306938639249, +302413501739

ISSN 1106-7237/ 2019 Hellenic Society of Vascular and
Endovascular Surgery Published by Rotonda Publications
All rights reserved. <https://www.heljves.com>